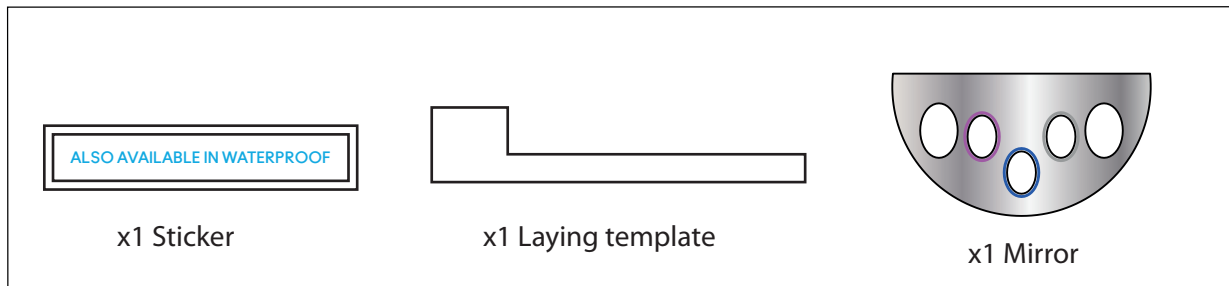




MC2326 - MACSTACK MASCARA WATERPROOF

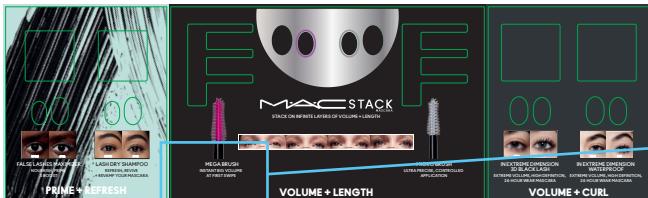
## INSTRUCTION SHEET FOR TOPPER 8-9 MACSTACK MASCARA

### CONTENT

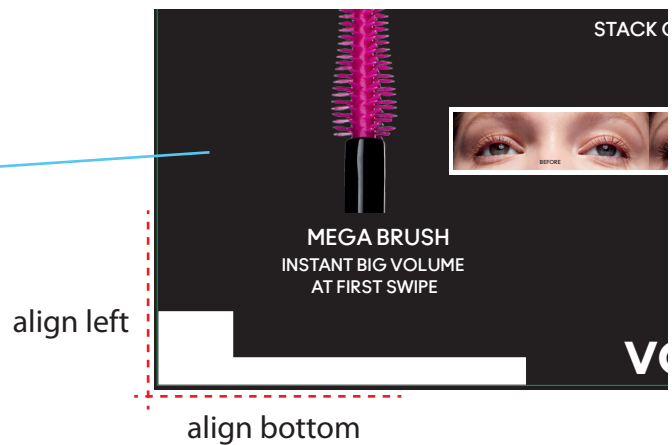


### STICKER

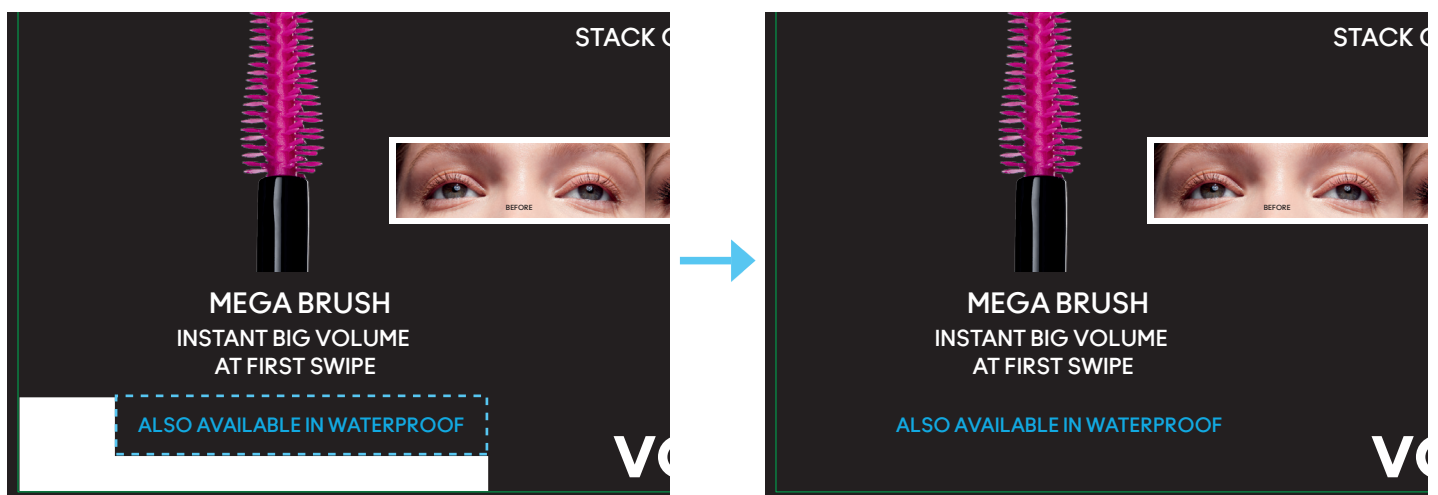
#### 1- Existing topper 8-9



#### 2- Place the laying template

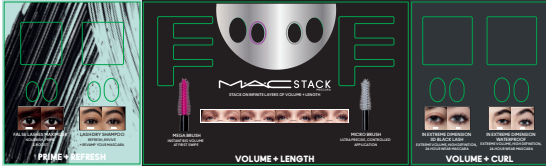


#### 3- Place the sticker

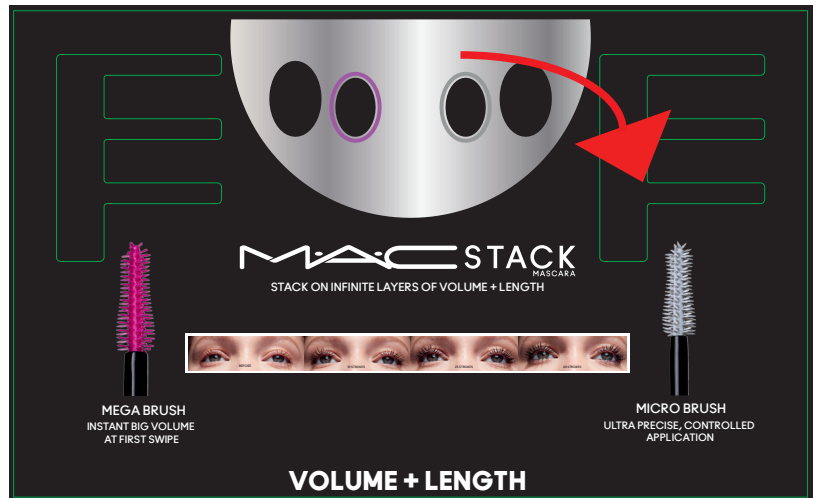


## MIRROR

1- Existing topper 8-9



2- Remove the existing mirror



2- Remove adhesive protection and stick the new one

